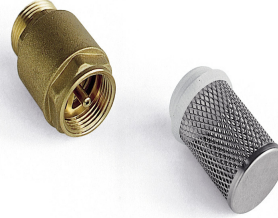


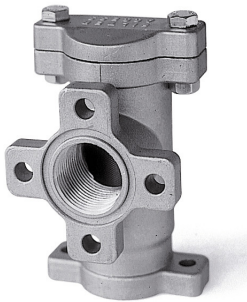
Filters



RA411020 3/4" Brass filter
RA411025 1" Brass filter



RA476020 3/4" Foot Valve
RA476025 1" Foot Valve



008950
In Line washable
gauze filter.



RA0025 1" Hose Filter
RA0020 3/4" Hose Filter



Non Return Valve
F15749000
1" with built in safety
valve



Vantage Valve
F1239905
1" lockage non return
valve.

Filters



10 Micron Filter

Ideal for **free flow** tanks, c/w aluminium head and transparent sediment bowl.

GZ/FFL/02	Fuel Filter cpl
GZ/FFL/FL/10	Filter Element/10 micron
GZ44397	Water absorbent element/ 30 micron dirt



HT1

1" x 1" hose tail to suit Groz filter



BS11013846

1" x 1" nipple to suit Groz filter



5 Micron Filter

F00611B00 Max 100 l/min with 1" fittings
c/w replacement filter.

F00611030 Replacement filter

F0061104 Water block / 30 micron



5 Micron Dirt Filter
c/w aluminium head and steel bowl
009150 Max 110 ltr/min with 1" fittings
F09359010 Replacement filter



10 Micron Dirt Filter
c/w aluminium head and steel bowl
F07772 Max 60 l/m with 1" fittings
F00611 Replacement filter.
009149 Max 110 l/m with 1" fittings
F09359 Replacement filter.



Water Absorbent and Dirt Filter
011698 Max 60 L/M with 1" ports
R15415 Replacement filter
011699 Max 110 L/M with 1" ports
R15416 Replacement filter

Bio-fuel Water Absorbent Filter
F1486300 Max 70 L/M with 1" ports
F1486100 Replacement filter



Filters



Filtroll Filtering Unit

F00506000

This filtering unit provides double filtering for diesel fuel and absorbs water and any impurities. Includes Panther 56 pump, 4m suction hose, 4m delivery hose, manual nozzle, water absorption filter 30 micron and 5 micron dirt filter. Can also be fitted with Purefuel Conditioner.



Tank Dryer

HYTD

The tank dryer absorbs water out of diesel. Sits inside the tank and comes with cord and fixing clip. Can be used in all types of diesel tanks.

